



YOUR KEY TO **UNLOCK** ALL THE
SOLUTIONS

WELCOME TO GATEWAY LOGISTIC MIDDLE EAST

Gateway Logistics Middle East, headquartered in the thriving logistics hub of Dubai World Central, is a pioneering company that transcends the boundaries of traditional logistics firms. Situated in one of the world's largest logistics centers, Gateway Logistics Middle East leverages its strategic location to offer exceptional services and solutions that far surpass industry norms.

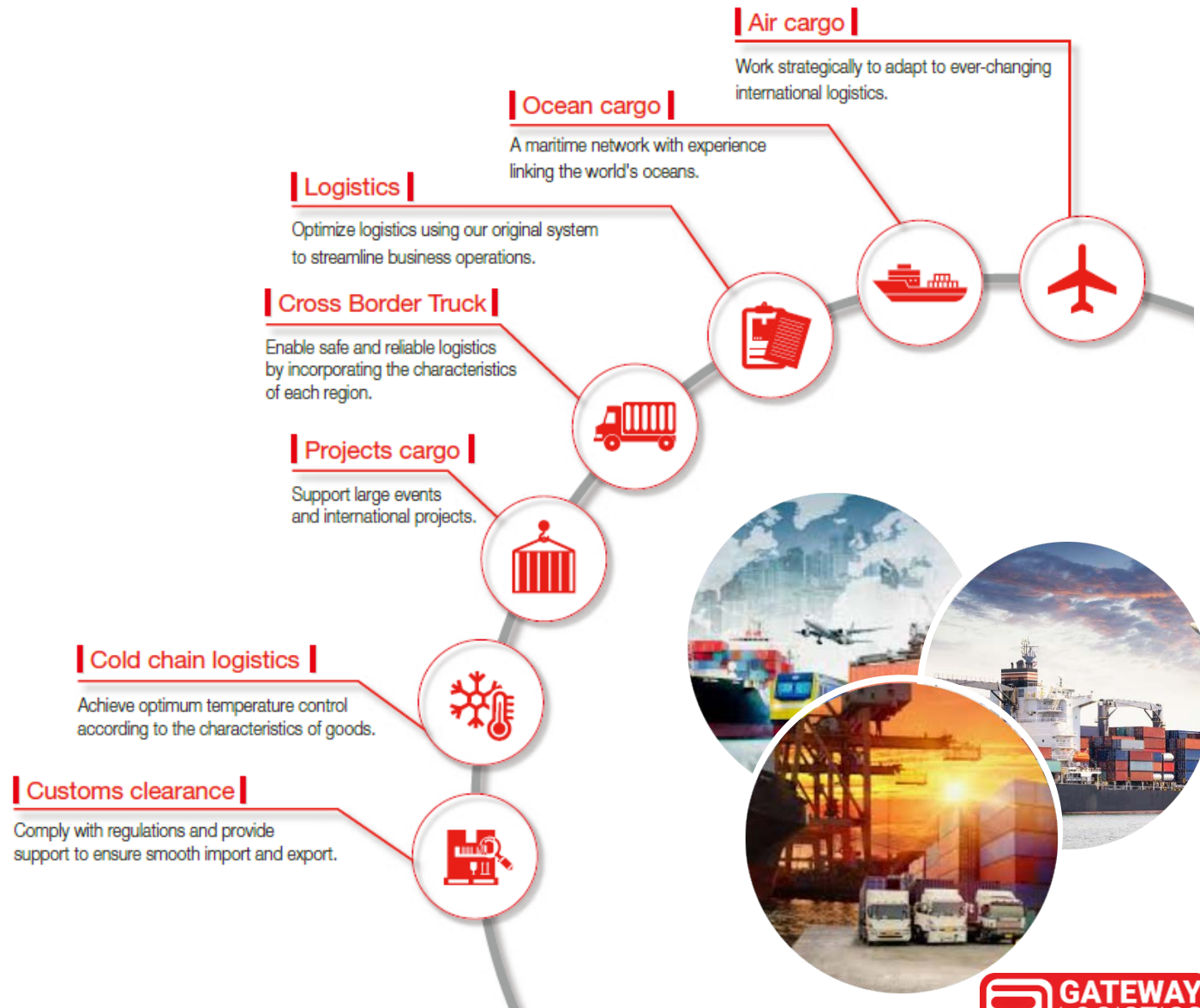
Nestled within the bustling environment of Dubai World Central, Gateway Logistics Middle East benefits from its proximity to an extensive network of transportation infrastructure, including airports, seaports, and highways. This prime location enables seamless connectivity to global markets and facilitates efficient movement of goods across the Middle East region and beyond.

Gateway Logistics Middle East distinguishes itself by providing a comprehensive suite of services tailored to meet the unique requirements of its clients. With a team of seasoned professionals and a commitment to customer satisfaction, the company goes above and beyond to deliver personalized solutions. Whether it's transportation, warehousing, supply chain management, or customized logistical support, Gateway Logistics Middle East ensures that every client receives the utmost attention and exceptional service.

At the core of Gateway Logistics Middle East's operations lies a dedication to embracing innovation and technology. The company actively integrates advanced logistics systems, data analytics, and automation to optimize processes, streamline operations, and deliver superior results. By staying ahead of industry trends and continuously improving its practices, Gateway Logistics Middle East sets new benchmarks in efficiency and effectiveness.

SERVICES PORTFOLIO

In line with its forward-thinking approach, Gateway Logistics Middle East places a strong emphasis on sustainability and environmental responsibility. The company actively promotes eco-friendly practices throughout its operations, aiming to reduce its carbon footprint and contribute to a greener future. By aligning its logistics processes with environmentally conscious strategies, Gateway Logistics Middle East demonstrates its commitment to preserving the planet for future generations.





Through its headquarters at Dubai World Central, Gateway Logistics Middle East establishes itself as a leader in the logistics industry. The company's unwavering dedication to excellence, focus on innovation, and commitment to sustainable practices position it as a trusted partner for businesses seeking reliable, efficient, and forward-looking logistical solutions.

- 10,000 sq.m permanent storage
- 32,000 sq.m of open facilities
- 6,000 sq.m of temporary warehousing
- Controlled environment storage conditions including cooling and freezing systems



GWJ's facilities bring in a complete range of fully equipped warehouses, including cooling and freezing storage backed by a customized plan. Our consolidated and integrated FM services are designed and implemented in such a way as to offer cost-effective solutions for customers with energy-efficient technologies. Our team is devoted reliable professionals that will assure the optimal handling of your goods

SERVICES PORTFOLIO

As Gateway Logistics Middle East continues to redefine the standards of the industry, it forges enduring partnerships, breaks new ground, and paves the way for a future where logistics is not just about moving goods but about delivering exceptional value at every step of the supply chain.

Transportation Solutions:

- **International Freight Forwarding:** Gateway Logistics Middle East offers seamless transportation of goods worldwide, managing the entire process from origin to destination with utmost efficiency and reliability.
- **Air Freight Services:** Leveraging strategic partnerships with leading airlines, Gateway Logistics Middle East ensures fast and secure air transportation of cargo, meeting time-critical deadlines.
- **Ocean Freight Services:** Through established relationships with major shipping lines, Gateway Logistics Middle East provides cost-effective and efficient sea freight solutions for both Full Container Load (FCL) and Less than Container Load (LCL) shipments.
- **Land Transportation:** Gateway Logistics Middle East organizes comprehensive road transportation services, including trucking, rail, and intermodal solutions, ensuring timely delivery across the Middle East region and beyond.
- **Customs Clearance:** The company's experienced customs brokerage team ensures smooth customs clearance processes, minimizing delays and ensuring compliance with local regulations.

Warehousing and Distribution:

- **State-of-the-Art Warehousing Facilities:** Gateway Logistics Middle East offers secure and strategically located warehousing facilities equipped with advanced inventory management systems to optimize storage, order fulfillment, and distribution.
- **Inventory Management:** The company provides efficient inventory control, real-time stock visibility, and value-added services such as pick and pack, labeling, and kitting to meet diverse customer requirements.
- **Cross-Docking and Transloading:** Gateway Logistics Middle East facilitates seamless transfer of goods from one mode of transportation to another, reducing handling costs and improving supply chain efficiency.
- **Last-Mile Delivery:** With a robust network of delivery partners, Gateway Logistics Middle East ensures prompt and reliable last-mile delivery, optimizing customer satisfaction and minimizing lead times



SERVICES PORTFOLIO

As an innovative logistics company, Gateway Logistics Middle East continuously expands its service portfolio to meet evolving market demands and remains committed to delivering exceptional value across the entire supply chain.

SILVER FOX GROUP

Supply Chain Management:

- **End-to-End Supply Chain Solutions:** Gateway Logistics Middle East designs and manages integrated supply chain solutions tailored to clients' specific needs, optimizing inventory, reducing costs, and enhancing overall operational efficiency.
- **Demand Planning and Forecasting:** The company leverages advanced forecasting tools and data analytics to help clients accurately predict demand patterns, enabling efficient inventory management and minimizing stock-outs.
- **Vendor Management:** Gateway Logistics Middle East collaborates with vendors and suppliers, implementing effective communication channels and performance measurement systems to ensure a seamless flow of goods and timely replenishment.
- **Reverse Logistics:** The company offers comprehensive reverse logistics solutions, managing product returns, repairs, and recycling processes in an environmentally responsible manner.

Customized Solutions:

- **Project Cargo Management:** Gateway Logistics Middle East specializes in handling complex and oversized cargo for large-scale projects, providing tailored solutions and meticulous planning to ensure safe and timely delivery.
- **Trade Show and Event Logistics:** The company offers end-to-end logistics solutions for trade shows, exhibitions, and events, including transportation, customs clearance, on-site handling, and return shipments.
- **E-commerce Logistics:** Gateway Logistics Middle East supports e-commerce businesses with efficient order fulfillment, inventory management, returns processing, and last-mile delivery, catering to the growing online retail sector.





brabus | automotive

STRATEGIC PARTNER

WORLD PREMIERE

INVICTO VR6 Plus ERV - fully certified armored vehicle with innovative Shelter Cell technology and side blast protection based on the new Mercedes-Benz G-Class in three accessory lines.

COMPLETE VEHICLES

Comprehensive vehicle development and high-class production to order of small-series with manufacturing processes that meet the highest quality standards and individualization requirements

ARMORING

Protection concepts from light armor to maximum safety – individual, certified and discreet solutions.

COMPONENTS

Development and production of accessory programs and limited editions along the entire product engineering process.

The logo for GLOBEX Investissement features the word "GLOBEX" in a large, bold, sans-serif font. The "G", "L", "B", and "X" are grey, while the "O" and "E" are blue with a white outline. Below "GLOBEX" is the word "Investissement" in a smaller, white, sans-serif font. The background of the slide is a photograph of a port at sunset, with a large ship docked and a long pier extending into the water. The sky is filled with warm, golden light from the setting sun.

STRATEGIC PARTNER

Globex, a logistics and services company, was established in 1998 as a joint venture between Goldfin and strategic partners. The company was initially licensed to distribute FedEx products in Morocco but has since expanded its operations to include a wide range of logistics services. Today, Globex is a multi-million dollar enterprise with over 250 employees in Morocco and Africa who are trained in FedEx ISO9001 certified operational standards. Globex's success has prompted it to expand its operations to the Middle East and Asia, with the aim of providing comprehensive logistics solutions and establishing strategic trade bridges with Morocco and West Africa.



STRATEGIC PARTNER

Maghreb Freight Systems is a full-service logistics provider that offers a comprehensive range of solutions, including freight forwarding, customs clearance services, smart warehousing, last-mile delivery, and home delivery. Leveraging its partnership with FedEx Logistics, the company is able to provide real-time inventory data, standardized operations, improved order and inventory accuracy, and online visibility through global trade data. With over five years of experience in the Moroccan market, Maghreb Freight Systems has expanded its portfolio by partnering with other reputable players in the industry, such as Bolloré and TAP Cargo.

OUR CLIENTS



AL SHAFAR GROUP





Thank you!

Contact detail

Office 444 Block A 5. DWC. South Dubai, Dubai,
United Arab Emirates. P. O. Box 282228
E-mail: connect@gwlme.com
Phone +971 (0) 44 107 151